



## 4 MANAGEMENT CHALLENGES AND HOW TO SOLVE THEM

As WMS experts our job is to help our customers cope with challenging realities in their warehouse management. We know all companies are different, but some warehouse challenges seem to be more common than others. Below we will explore 4 challenges that have a direct effect on customer delivery, as well as your profitability.

### CHALLENGE #1 KEEPING TRACK OF YOUR INVENTORY

For many companies, a well-thought-out omnichannel strategy is best to keep up with the competition. But keeping retail and e-commerce in the same flow can be tricky when it comes to controlling the stock balance.

#### HOW CAN THIS PROBLEM BE SOLVED?

Picking accuracy is the key. ProVision WMS can help you verify picking without adding resources and make stock analysis easier.

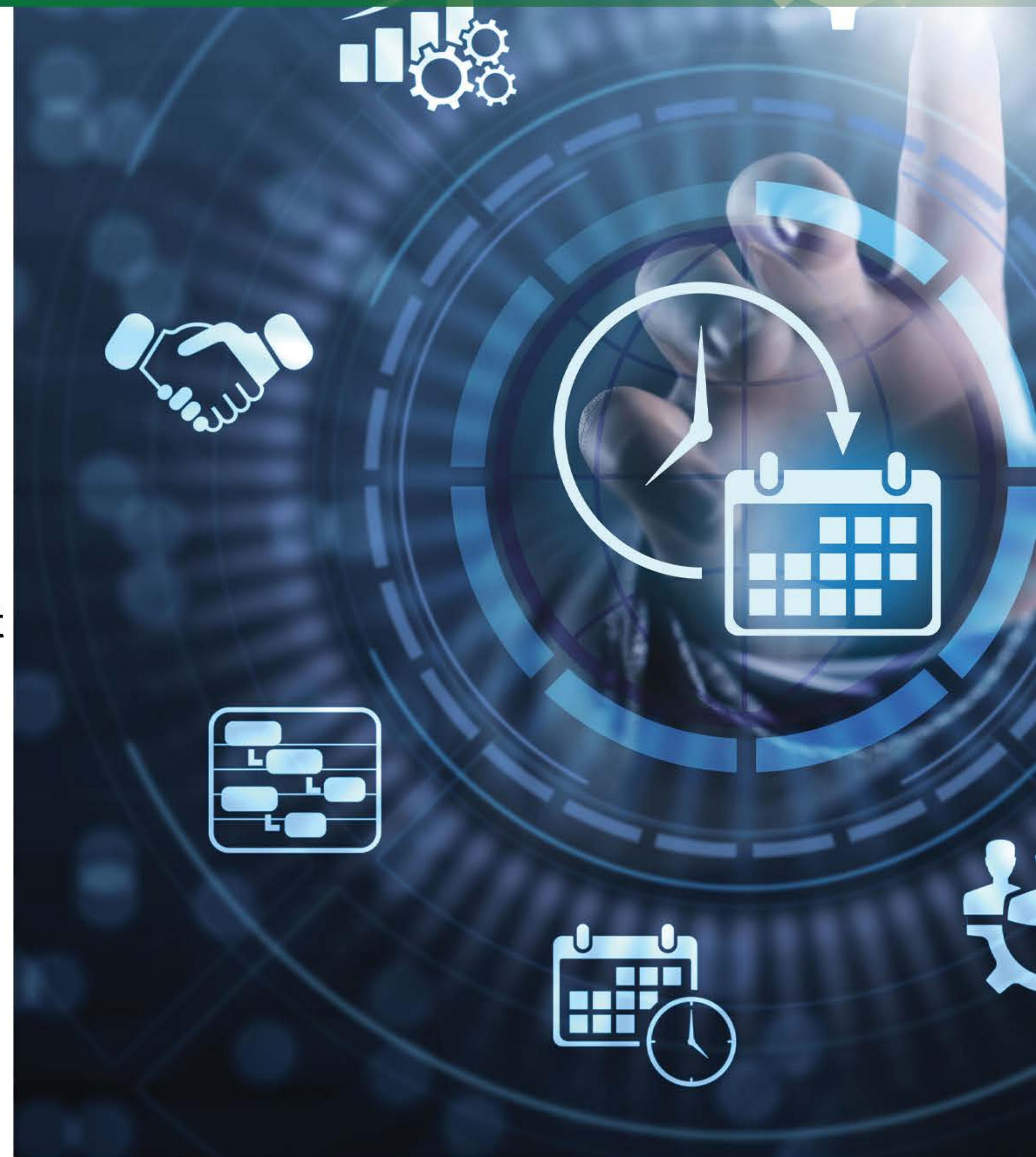
### CHALLENGE #2 COST-EFFECTIVE RETURN HANDLING

Return handling in a warehouse is costly, time-consuming, and messy. Booming e-commerce creates an ever-growing problem. Today's customers will forever overuse a return policy.

#### HOW CAN THIS PROBLEM BE SOLVED?

Getting the returned item back into rotation and getting the refund/exchange solved efficiently is vital to keeping costs down. ProVision WMS can help by:

- Standardizing the return flow
- Enable the use of automation





### **CHALLENGE #3**

#### **ENSURE DELIVERY ACCURACY**

Many returns are made because the wrong goods were shipped. Therefore, to keep the return cost down and customer satisfaction up, accurate picking, packing, and send-offs are critical processes in a warehouse.

#### **HOW CAN THIS PROBLEM BE SOLVED?**

Today there are plenty of technologies to help increase delivery accuracy in a warehouse. Such as Barcodes RFID, Smart Scales, and Camera Verification. In combination with proVision WMS, you will get the control and traceability needed to reduce picking errors.

### **CHALLENGE #4**

#### **IMPROVE MANUAL PICKING**

The pandemic has only accelerated what has been happening for the last decade...that online orders are taking over our warehouses. This means higher complexity in picking, with more single items. Picking, a wider range, and a higher seasonal variation. Investing in proVision WMS automation is one way to increase efficiency while making the rest of the labour force through improved picking process.

#### **HOW CAN THIS PROBLEM BE SOLVED?**

With a high volume of small orders, manual picking is all about using technologies to enable us to work smarter. ProVision WMS contains several functionalities that can help pick route optimization, smart slotting, and frequency analysis all increase productivity and improve accuracy in manual picking. Together with easy-to-use hardware, you're ready to go!

**AHEARN & SOPER INC./ PROVISION WMS** — For over 35 years, we have specialized in quality, industrial supply chain with intertwined solutions, Engineered systems, Hardwares, Supplies and Services.

**WE INVEST OUR EXPERTISE IN OUR CLIENTS SUCCESS!**  
Contact Us at [www.provisionwms.com](http://www.provisionwms.com)